

*You are cordially invited to the
Baltimore Folk Music Society*

MidWinter Ball

Saturday, January 29, 2011

7:00 pm Reception

7:30 pm Grand March

7:40 – 11:30 pm Contra and Couple Dance

to the intoxicating blend of

Elixir

Tonic for your midwinter refreshment

Nils Fredland, calling / trombone / vocals

Ethan Hazzard-Watkins, fiddle

Jesse Hazzard-Watkins, trumpet / flugelhorn

Anna Patton, clarinet / vocals

Owen Morrison, guitar / foot percussion

Join us in a NEW location

In the Ballroom of the

Temple of the Ancient and Accepted

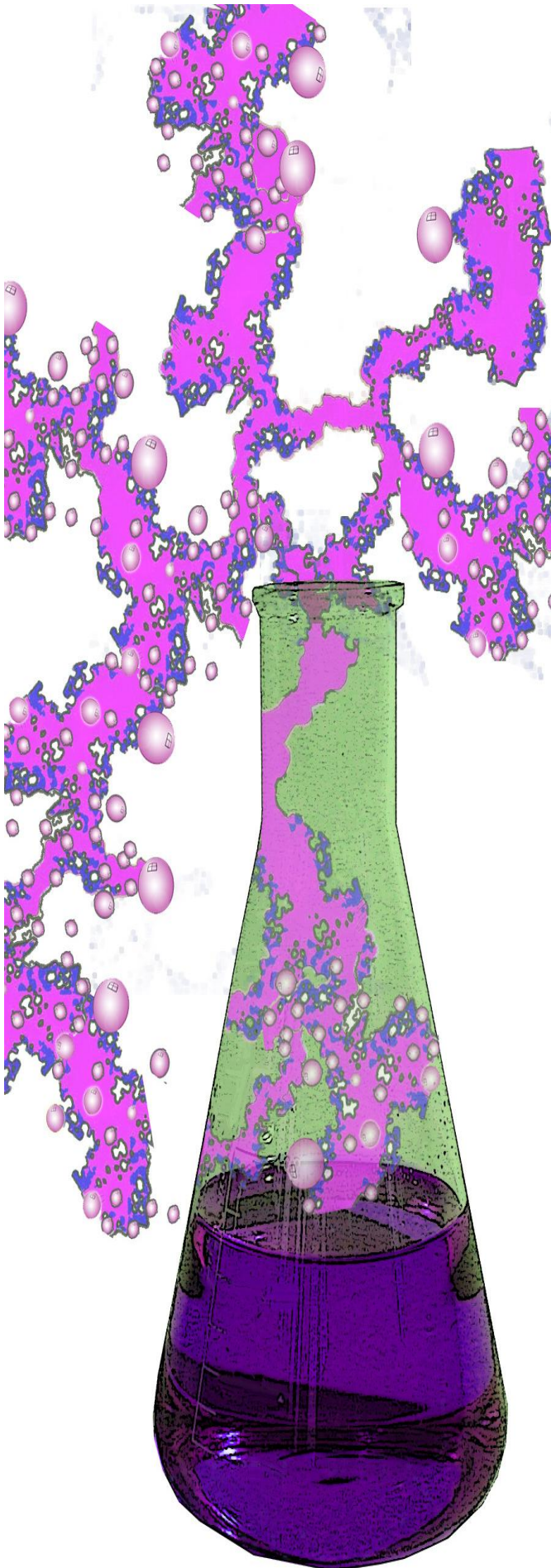
Scottish Rite Of Freemasonry

3800 North Charles Street

Baltimore, MD 21218

Colorful and Magical attire encouraged

Pot luck finger foods gratefully accepted



Directions to the Scottish Rite Masonic Center

3800 North Charles Street, Baltimore MD 21218

From I-95 (northbound and southbound): Take exit 53 for I-395/Martin Luther King Blvd Toward downtown. Merge onto I-395 N. Take a slight right at Conway Street. Take a left at Charles Street. Continue north to 3800 North Charles Street. Turn left onto 39th Street. Entrance is immediately to the left through the side of the building.

From I-83 (southbound toward Baltimore): Take exit 7 for 28th Street toward Druid Park/Lake Drive. Keep left at the fork to continue toward W 28th Street and merge onto W 28th Street. Turn left at North Charles Street, continue to 3800 North Charles Street. Turn left onto 39th Street. Entrance is immediately to the left through the side of the building.

From I-70 (eastbound): Take the Baltimore Beltway I-695 south to I-95 northbound and follow directions for I-95 above.

Note that the ballroom entrance is under an awning on the 39th street side (and NOT through the 28-foot high doors at the top of the monumental front steps on Charles Street). Gallant escorts are encouraged to drop off their most honored guests at the 39th street door before parking.

Limited parking is available at the temple. Additional parking available at the Cathedral Church of the Incarnation two blocks South on Charles Street at the corner with University Parkway. Street parking is also available.



Tickets available in person, by mail or online at www.bfms.org. Tickets will arrive by email. To receive tickets by snail mail, please include a self-addressed stamped envelope.

Before December 20, 2011, BFMS Members and affiliates-\$28 / Students-\$15 / Others-\$32

After December 20, 2011, but before January 17, BFMS Members and affiliates-\$33 / Students-\$20 / Others-\$37

Late registrations (after January 17 and at the door), if available, Members-\$38 / Students-\$25 / Others-\$42

A limited number of discounted admissions are available for volunteer workers.

Refund Policy: If cancelled for inclement weather, full refund provided. If event is held but you must cancel your attendance, you may claim your unused ticket for a tax-deductible donation to the Baltimore Folk Music Society.

Make checks payable to BFMS.

For more information, check www.bfms.org, email midwinter@bfms.org or call 410-608-6731.

Mail to MidWinter Ball, c/o Joyce Duffy-Bilanow, 5523 Eaglebeak Row, Columbia, MD 21045

Name _____ Member affiliation _____ Amount \$ _____

Name _____ Member affiliation _____ Amount \$ _____

Address _____ Total \$ _____

City _____ State _____ Zip _____

Phone _____ Email _____

