



Baltimore Folk Music Society

Member, Country Dance & Song Society

www.bfms.org

December 2010

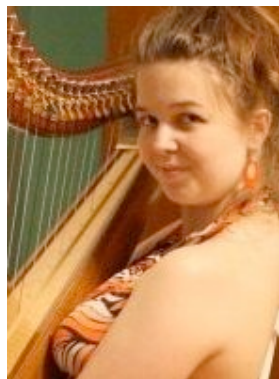
The Friendly Coffeehouse *

Friday, December 10, 8 - 11 pm

Calvary Baptist, 120 W Pennsylvania Ave., Towson

The Friendly Coffeehouse Open Mic takes place on Second Fridays each month at 8 pm. A friendly, supportive atmosphere for acoustic musicians, poets, storytellers and other folkies. Open mike slots usually three songs or ten minutes, depending on the size of the crowd. Please check our website (www.friendlycoffeehouse.org) on the day of the event for occasional last minute changes of venue.

This month will feature the talents of storyteller **Chris Potts** (photo, right) and harpist **Samantha Manchester**. Sharing oral narrative stories with audiences of all ages in educational, workshop and performance settings, Chris is a Baltimore storyteller who specializes in myth, folk and fairytales from around the world. With her dramatic tales of struggle and triumph, Chris invites listeners to explore new worlds and re-discover personal resources of strength, wonder, courage and beauty residing within themselves.



Chris renders lively tellings of folk tales drawn from many cultures, and is sure to tell a few stories you and yours have not heard before. Celtic harpist **Samantha Manchester** (photo, left) will provide a soundtrack for the tales as our featured musician for the evening.

If you are interested in being a featured act, please contact Jon S. Patton at friendlycoffeehouse@gmail.com. In addition, you can now join the Coffeehouse on Facebook! (Search keywords: "BFMS Open Mic: The Friendly Coffeehouse")

BFMS Newsletter online: <http://www.bfms.org/newsletter.php>.

We also offer the option of electronic delivery of the newsletter via email each month. Electronic delivery has several advantages, as the digital copy (pdf format) is easy to find and access on your computer, cuts down on clutter and wasted paper, and saves BFMS vital resources that should be going to music, dance, and other folk activities!. To join the growing group of BFMS members who have opted for email delivery of the newsletter, email mal2@bfms.org with the subject line "Please email me the pdf version of the newsletter."

BFMS Sponsored Dances

BFMS English Country Dance*

St. Mark's on the Hill, 1620 Reisterstown Rd, Pikesville

1/3 mile inside the Baltimore Beltway, at Exit 20 South Monday evenings, 8 - 10:30 pm; new dancer session begins promptly at 7:45 pm on the first Monday of each month.

Jane Austen did it (and wrote about it). George Washington did it (but not with Jane Austen). You can too! Each dance is taught and walked through. You don't have to bring a partner. We always have live music and friendly dancers ready to welcome and teach new dancers. Admission: \$11/\$8 for BFMS members & affiliates. Info: engdance@bfms.org or www.bfms.org

December 6

Tom Spilsbury calls with music by **Jeff Steinberg** on violin, **Karin Loya** on cello, and **Judith Bourzutschky** on piano.

December 13

Michael Barraclough calls to tunes by **Becky Ross** on violin, **Robin Wilson** on flute and concertina, and **Jonathan Jensen** on piano and more.

December 20

Melissa Running calls to music by **Carl Friedman** on violin, **Marty Taylor** on recorder and concertina, and **Judy Meyers** on piano.

December 27

Celebrate the last Monday of 2010 with an evening of dances called by **Rich Galloway**. Music by **Edie Stern** on violin, **Robin Wilson** on flute and concertina, and **Liz Donaldson** on piano.



The Baltimore Folk Music Society is funded by an operating grant from the Maryland State Arts Council, an agency dedicated to cultivating a vibrant cultural community where the arts thrive. Funding for the Maryland State Arts Council is also provided by the National Endowment for the Arts, a federal agency, which believes that a great nation deserves great art.

BFMS American Contra & Square Dance*

Historic Lovely Lane Church, 2200 St Paul St.

Wednesday evenings, 8 - 10:30 pm

New dancer orientation: 7:30 pm, 2nd and 4th Wednesdays

Music and dance styles include New England, Southern Appalachian, and Celtic. Dances taught and walked through. No partner necessary. New dancers always welcome. Admission: \$13/9 BFMS members/affiliates. Full-time students \$6/\$4. Snacks for the break are welcome.

December 1

Susan Hankin calls to **Looney Tunes with Ken Kolodner: Ken Kolodner** on fiddle and hammered dulcimer, **Lisa Roberts** on fiddle and banjo, **Tom Reedy** on guitar, and **Jim Bienemann** on bass.

December 8

Janine Smith calls to **Intelligent DeZarn and the Natural Selections: Joe DeZarn** on fiddle, **Carl Friedman** on fiddle and Irish flute, and **Marc Glickman** on piano.

December 15

Kim Forry calls to the **Contra Rebels: Todd Clewell** on fiddle, **Henry Koretzky** on guitar, and **Bruce Campbell** on bass. Join us at 7:30 for our monthly Style Session!

December 22

Perry Shafran calls to the fabulous **Baltimore Open Band!**

December 29

Susan Taylor calls to the music of **Emily Aubrey** on fiddle; **Robin Wilson** on flute, concertina & sax; **Brenna Hogan** on hammered dulcimer, and **Liz Donaldson** on piano.

Directions to Lovely Lane

From the North: Take I-83 south to the 28th Street/Druid Hill exit. Bear left and take 28th St. to Maryland Ave. Turn right on Maryland Ave then left on 23rd St.

From the South: I-95 to I-395, exit onto S Howard (downtown Baltimore) turn right onto Pratt. Left onto Charles, right onto 23rd St. Use parking lots on either side of 23rd St at St Paul. The church is on the right.

English Open Band Practice‡

Date TBA

The **Geud Band of Baltimore**, a rehearsed open band for English Country Dancing, practices monthly and plays for Monday night English dances every 2-3 months. Newcomers welcome. For information, contact Eileen Franch, 410-889-3252, or franch@verizon.net.

BFMS and Member Sponsored Dances & More

BFMS Second Saturday Contra Dance *

Saturday, December 11, 8 - 11 pm;

New dancer orientation at 7:30 pm

St Mark's, 1620 Reisterstown Rd., Pikesville MD

DeLaura Padovan calls to the tunes of **Hickman, Glickman, and Devine: Steve Hickman** on fiddle, **Marc Glickman** on piano, and **John Devine** on guitar.

There will not be an organized potluck prior to the dance.

Admission: \$9 BFMS members and affiliates, \$13 non-members. Under 21 and full-time students with ID: \$4 members, \$6 non-members. Beginners, singles, couples, and families are welcome. No Experience necessary; you don't need to bring a partner. For more information call the BFMS hotline at 1-888-646-BFMS or email Becca Denison at nutritionexpeditions@yahoo.com.

4th at 4 Storyfolk*

The 4th at 4 Storyfolk - Baltimore's monthly story swap group does not meet in December. Have a happy holiday season! We look forward to seeing you on January 23, 2011 at Towson Unitarian Universalist Church. For more information, contact Barbara at 410-252-1438 or Diane at 410-321-8419, or e-mail specialevents@bfms.org.

BFMS Board Meeting *

Tuesday, December 7, 7:30 pm

Meetings are open to all BFMS members, and all are encouraged to attend. Ice cream social follows meeting. For directions, agenda, and other information, please contact the President (see page 9).

As you end 2010, remember BFMS...

As you end the year, please remember the Baltimore Folk Music Society when making donations. Donations made by December 31 will be deductible when you prepare this year's taxes. Donations can be made by sending a check to The Baltimore Folk Music Society, P.O. Box 7134, Waverly Station, Baltimore, MD, 21218-0134. Or you can save a stamp by donation online at <http://bfms.org/donations.php>

Thank you for your generous support!

Midwinter Ball - Elixir and Nils Fredland!*

Saturday, January 29

Scottish Rite Masonic Hall, 3800 N Charles, Baltimore

Elixir, a magical tonic for you midwinter refreshment!

Tickets are now available for the BFMS MidWinter Ball, a colorful, magical, not-to-be-missed event featuring the fantastic young band **Elixir** with **Nils Fredland** calling. This year our MidWinter Ball will be held at a wonderful NEW location, in the grand ballroom/banquet hall at the Scottish Rite Masonic Center at 3800 North Charles Street near the Johns Hopkins campus in Baltimore.

Elixir blends driving fiddle and guitar with the rich texture and rhythmic excitement of a full horn section, deftly weaving brassy riffs and daring solos in and out of traditional Irish, French Canadian and New England tunes. **Elixir** plays for dances, festivals, camps, weddings and other events, with a repertoire that includes contra, English, swing, waltz, couples dance, and concert music. **Elixir** includes **Ethan Hazzard-Watkins** on fiddle, **Jesse Hazzard-Watkins** on trumpet and flugelhorn, **Anna Patton** on clarinet and vocals, **Owen Morrison** on guitar and foot percussion, and **Nils Fredland** on trombone and vocals and calling the dances.

Nils Fredland has been making music, leading dances, and bringing people together for 20 years as a teacher; singer; instrumentalist; contra, square, and community dance leader; and workshop leader. Nils is known for his technical skill, disarming friendliness, comfortable stage presence, and soothing voice. He brings this unique collection of traits and talents to each of his various engagements, making him one of the busiest and most sought-after callers in the business.

The Scottish Rite Masonic Center broke ground in 1930 on the corner of 39th and North Charles Street with architectural inputs from John Russel Pope, the designer of the Jefferson Memorial and National Gallery of Art in D.C. The large, lavish ballroom with oak floor was just improved to its present state in 2004, and it is now time for BFMS to enjoy it's first event at this magnificent venue. Our women guests will be pampered by the exquisitely furnished ladies lounge, while men should not be distracted by the pool tables to make time for dancing.

Dancing will start at 7:30 pm with the Grand March and will continue with contras and couple dancing until 11:30 pm, with a few short breaks for refreshments. A special rate for BFMS members of \$28 and a student rate of \$15 will be available until December 20. Don't delay in reserving your place, as prices go up starting December 21. In the unlikely event the ball is canceled due to inclement weather, a full refund will be offered. More information on costs and registration is available at bfms.org. A limited number of discounted admissions are available for volunteer workers. For questions, call Joyce Duffy-Bilanow at 410-608-6731.

BFMS & Member Sponsored Events

Sandy Spring Ballroom Dancing‡

Mondays, 7:30 - 10 pm

17801 Meetinghouse Rd, Sandy Spring

Free ballroom dancing and lessons. Beginners and advanced welcome. Contact Dave & Anne Greene: DGreene@All-Systems.com or 301-570-3283.

International Folk Dancing‡

Saturdays, 7:30-10:30 pm

Homewood Friends Meetinghouse, 3107 N. Charles

Dances from Europe, Israel and other countries of the Near and Middle East. Beginners welcome; no partner necessary. Admission \$2; first time free. Lessons given in the first hour. **No Dance December 25.** Al & Hildy Sanders 410-484-9392 (check answering machine message to confirm dancing is on) or Paul & Elise Kreiss 410-367-8194 (evenings & weekends) or pkreiss@toadmail.com. Across Charles St. from Museum Drive (just east of Johns Hopkins). Enter down outside stairs from side porch. Call to arrange handicapped access.

Ballroom Dancing & Lessons‡

Fridays, 8 pm

JHU ROTC Building

Waltz, rumba, tango & more! Our 18th year; always free! From 39th St & University Pkwy go south onto San Martin Drive; take 3rd left into campus. Climb wooden stairs, far side of building. Don't pay to park. No partner needed. Plan to change partners often (not required). For info contact Dave/Anne Greene 410 599-3725.

Singing for Everyone‡

Sunday, December 5, 7 - 9 pm

Homewood Friends Meetinghouse, 3107 N Charles

Join us for an evening of songs and company - all are welcome! Snacks are welcome but will be confined to the lunch room downstairs. Free on-street parking. For more info or directions, please contact Susan Warner at scwarner@hotmail.com



Dances of Universal Peace‡

Sunday, December 12, 3 - 5 pm; veg. potluck following
612 Hollow Road, Ellicott City

Dances of Universal Peace create a circle for Heartfelt Fun and Healing. New and Old friends welcome: No experience or partner needed. If you move you can join this dance circle, if you breathe you can join in these songs.

Young people welcome to play quietly in the space or enjoy the outdoors or weave in and out of our circle.

For more information on the Dance Circles, www.peacedance.org. For questions call Peggy at 410-465-1914.

Sacred Harp Sing‡

Sunday, December 19, 4 pm

Sandy Spring, MD

Everyone is invited to sing Sacred Harp on the third Sunday of each month at the school building behind the Community House located at 17801 Meetinghouse Road. Pot luck supper follows. Contact Dave Greene: DGreene@All-Systems.com or 410-599-3725 or 301-570-3283.

Baltimore Open Band Practice ‡

Sunday, December 12, 4 to 6 pm

This group is a community gem whose members usually meet on the second Sunday of each month in Catonsville - note change this month. All ages, instruments, and levels are truly welcome. For more info, contact McGregor Yatsevitch 443-840-9339.

Orrin Star House Concert‡

Saturday December 4, 7:30pm

Pasadena

Once described as 'Arlo Guthrie-meets-Doc Watson', Orrin was the 1976 *National Flatpicking Champion* and has appeared on *A Prairie Home Companion*.

For location/reservations contact annatoyna@mac.com or 410-360-7360.

Doors open 7:00pm. \$15. www.orrinstar.com

Other Local Dances

Annapolis Traditional Dance Society Contra

Saturday, December 18, 7 p.m.; workshop 6:30
Annapolis Friends Meeting Hall, 351 Dubois Road

Ann Fallon calls dances to the tunes of **A P and the Banty Roosters**: **Andy Porter**, fiddle; **Joe Langley**, guitar; **Mark Lynch**, mandolin; **Art Abrams**, bass.

Admission \$10 with discounts for seniors, students, families and members of ATDS. All ages welcome. All dances taught and walked through. Snacks to share are welcome!

Questions?? Contact Jan Scopel at 443-540-0867 or janscope@hotmail.com; www.contradancers.com/atds

Locust Lane Contra Dance

2nd & 4th Friday, 8 - 11 pm, Free workshop at 7:30
Christ the Savior, 5501 Locust Lane, Harrisburg PA

December 10

Becca Dennison and **Total Hip Replacement**

December 24

No Dance

December 31

Special New Year's Eve Dance! See website for details.

Admission \$9/\$8 members. For more info or directions, contact Dave Colestock at 717-770-1477 or LocustLaneContra.freesevers.com.

Glen Echo Afternoon Waltz

Sundays, 3 pm lesson, 3:30 - 6 dancing.
Spanish Ballroom, Glen Echo Park, Glen Echo, MD

December 5: **Some Assembly**

December 19: **Terpsichore**

Lively mix of folk waltzes with a few other couples dances, including Hambo, Schottische, Swing, Tango, and Polka. No partner required. \$10. For info: www.WaltzTimeDances.org, info@WaltzTimeDances.org, or call Glen Echo Park at 301-634-2222.

Friday Night Dancers

Fridays, 8:30 - 11:30 pm, Beginner Workshop 7:30
Spanish Ballroom, Glen Echo Park, MD

Weekly contra dances to live music in the Glen Echo Park Spanish Ballroom. Admission \$9. www.fridaynightdance.org

December 3

Robert Cromartie calls to **Sugar Beat**.

December 10

Sarah VanNordstrand calls to the fabulous **Glen Echo Open Band**. Free admission for all dances age 17 & under!

December 17

Michael Barraclough calls to **Morrison Brothers**.

December 24 & 31

No dances.

FSGW Sunday Night Squares & Contras

Sundays, 7:30 - 10:30 pm, Beginner Workshop 7 pm
Glen Echo Park, MD

Contras and squares for new and experienced dancers. No partner necessary. New dancers please arrive early. Admission \$12, \$9 for members, \$4 ages 17 and under. www.fsgw.org

December 5

Perry Shafran call to **Devine Comedy**.

December 12

Ann Fallon calls with **Floor Play**.

December 19

Anna Rain calls with **Morrison Brothers**.

December 26

Susan Taylor calls to **Irish Persuasion**.

Crossover Contra: TechnoPrisoners

Tuesday, December 21, 7:30 pm
Ballroom Annex, Glen Echo Park, MD

Greg Frock calls, DJ **psychophony** spins, you dance. Pop, dance, techno, alternative - come out and see what the buzz is about! www.fsgw.org for more information.

More Dances

Lancaster Contra Dance

Saturday, December 18, 8 to 11 pm

St John's Episcopal, 321 W. Chestnut, Lancaster PA

Devine Comedy with **Steve Hickman** on fiddle, **John Devine** on guitar, and **Marty Taylor** on whistles, recorder, and concertina. **DeLaura Padovan** calling. Beginners workshop at 7:15 pm. Dance 8-11 pm. \$8/\$5. For information call Shane at (717) 538-5833 or www.lancastercontra.org.

FSGW English Country Dancing

Wednesdays 8-10:30 pm

Glen Echo Town Hall, 6106 Harvard St, Glen Echo

\$10/\$8 members. More info: 301-320-2469, 301-229-3577, or English@fsgw.org.

December 1

Melissa Running leads the dances while **Colleen Reed**, **Jeff Steinberg**, and **Liz Donaldson** play the tunes.

December 8

Stephanie Smith calls to the music of **Susan Brandt**, **Ralph Gordon**, and **Melissa Running**.

December 15

Tom Spilsbury calls while **Karen Ashbrook**, **Paul Oorts**, and **Liz Donaldson** make the music.

December 22

Susan Taylor calls to the playing of **Becky Ross**, **Karin Loya**, and **Francine Krasowska**.

December 29

Diane Schmit calls to music played by **Anna Rain**, **Bruce Edwards**, and **Melissa Running**.

Slow Blues and Swing Dancing and Lesson

Thursdays, 9 - 11 pm; 8:30 lesson

"Back Room" at Glen Echo Park

Music by DJ Mike Marcotte & guests. Admission \$8 for lesson and dance. For more information, call Donna Barker at 301-634-2231 or Glen Echo Park at 301-634-2222, or go to www.capitalblues.org. **No dance December 30.**

Zydeco Dance: Curly Taylor & Zydeco Trouble

Thursday, December 2, 7:30 - 11:30 pm

American Legion Hall 136, Greenbelt

Lesson given by Michael Hart and Sharon Schiliro. Admission \$15. For more information, call Michael Hart at 301-762-6730 or go to www.DancingbytheBayou.com.

Zydeco/Cajun Dancing

Sunday, December 12, 3:30 - 6 pm; lesson at 3

Spanish Ballroom, Glen Echo Park

Dikki Du and the Zydeco Krewe. Dance lesson given by Michael Hart and Sharon Schiliro. Admission is \$15. For more information, call Michael Hart at 301-762-6730 or go to www.DancingbytheBayou.com.

Scandinavian Dance Classes

Tuesdays, See schedule below, 7:30 - 9:30 pm

NIH, Bethesda, MD (ID required to enter facilities)

Beginners (December 7) learn Hambo, Schottish, Waltz, Zwiefacher, and other couple turning dances. Advanced Class (December 14, 21, & 28): learn Boda, Orsa, Föllinge, Gothenburg Mazurka, Finnskogspols, Nigpolska, Gammalvånster, Telespringar, and requests. Sometimes live music. Wear smooth-soled shoes for turning, not running shoes. \$5. Info: Lisa Brooks at 240-731-1935, lisa@HamboDC.org, or www.HamboDC.org. Go to web site to get map for directions and parking! New entrance to NIH -- be sure to check web site for info!

Shepherdstown Contra Dance

December 4, 8 - 11 pm; workshop 7:30

War Memorial Building, Shepherdstown

Ann Fallon with **Sugar Beat**. Join us at 6 pm for our annual holiday potluck.

All levels welcome, no partner needed. Please wear clean, soft-soled shoes to protect the floor. Adults \$10, SMD members \$7, \$4 dancers under 12. www.smad.us

Elverson Contra Dance

Saturday, December 4, 7:30 - 10:30 pm

Elverson PA

New England style contra dances, traditional squares, waltzes and more. No partner necessary. **Dave Rupp** and **Dance Wiz**. Admission: \$10; \$5 students (high school and younger) and seniors (65 and older). For more info, 610-856-5180 or www.elversoncontra.org.

Concerts

Perry Hall Folk Music Night

Saturday, December 18, 7 - 10 pm

Perry Hall UMC, 9515 Belair Rd., Baltimore

Todd Walker <http://www.toddcwalker.com/> is featured performer. Admission free, donations welcome. This is an "open mike" event. For more information, see www.perryhallumc.org or contact ndzimmer@comcast.net or 410-529-7176.

The Cellar Stage

Fridays, 8 pm

Faith UMC, 5315 Harford Rd., Baltimore

December 3: A show for the holidays with **Robin Bullock, Al Petteway and Amy White.** \$23

December 17: A Celtic Christmas with **The Hedge Band.** \$20

Tickets: 410-521-9099, to speak with Joyce: 410-922-5210
joycersica@yahoo.com www.uptownconcerts.com

Early Dawn Workshop and House Concert

Saturday, December 11, see times below

Potomac, MD

Early Dawn is a trio of young singers who passionately study and sing works from the great traditions of polyphonic singing.

The workshop explores the Georgian material they discovered this summer. The concert program will feature traditional sacred and secular songs from the Republic of Georgia, as well as shape-note and ballad tunes and contemporary shape-note compositions from the United States, as well as few mediaeval European songs.

Workshop, including concert admission \$30 (\$20 student/senior) 2 – 5pm. Vegetarian potluck 5:15 - 7. Concert only 7:30 \$15 (\$10 student/senior). Additional \$5 discount if you bring food for the potluck.

Due to limited space, reservations are necessary 301-717-4641 or glen.echo@erols.com by Dec. 8.

Helicon's 25th annual Winter Solstice Concert

Saturday, December 18; 3:30 pm & 8 pm

Kraushaar Auditorium, Goucher College

The Baltimore-based trio, **Helicon**, celebrates their 25th reunion appearance in this year's Winter Solstice Concert, at Kraushaar Auditorium (1021 Dulaney Valley Road) at Goucher College. **Helicon** blends the talents of **Ken Kolodner** (hammered dulcimer, fiddle, hammered mbira), **Chris Norman** (wooden flutes, tin whistle, small pipes, vocals, piano) and **Robin Bullock** (guitar, cittern, fiddle, piano) and a repertoire spanning the traditional folk music of nearly 30 countries, along with the sounds of the season. The trio unites with Norman coming in from Nova Scotia and Bullock from France. Joined Helicon is Kolodner's son, **Brad** (clawhammer banjo and banjola) to celebrate the release of their duo recording "Otter Creek." The show is a perfect way for the whole family—young and old—to celebrate the winter holidays. Tickets are available at www.kenkolodner.com via credit card or call 410-243-7254; \$28 at the door; \$25 in advance; \$21 for groups of 15+; \$21 for groups of 30+. Directions to the campus and Kraushaar Auditorium can be found on Goucher's website at <http://www.goucher.edu/about/>

Uptown Concerts at Baldwin's Station

Thursdays, 8 pm (dining room opens 6:30)

7618 Main Street, Sykesville

December 2: **Garnet Rogers.** \$20

December 9: A **Connemara** Christmas. \$20

December 16: A show for the holidays with **The Hard Travelers.** \$22.50

Tickets: 410-795-1041 or uptownconcerts@gmail.com

Greg Brown in concert

Sunday, December 5, 7:30 pm

Camp Hill UMC, Harrisburg, PA

The Susquehanna Folk Music Society presents **Greg Brown** on Sunday, December 5, at the Camp Hill United Methodist Church located at 417 South 22nd Street in Harrisburg, PA. Greg Brown is a renowned musician, songwriter and storyteller whose style includes gospel, blues, country, rock and jazz.

There will be a potluck dinner at 6 pm. Tickets are \$25. Information and tickets at www.susquehannafolk.org

Weekends & Special Events

Terpsichore's Holiday Dance Camp

December 27 - January 1

Roanoke, VW

Terpsichore's Holiday is a folk dance and music camp for ages 4 and up. 5 days and nights of dancing, singing, music-making, crafts, nature hikes, meals and 4 star accommodations. The camp typically features classes in Contras & Squares, Waltz, Couples Dances, Longsword, Morris, English Country Dances, Dance Band and more. Our program offers a full schedule of classes for adults and teens. Children have a special program with classes that offer them dance skills in a fun environment plus other activities including: Arts & Crafts, Nature Walks, Singing and more.

Featured this year: **David Millstone, The Avant Gardeners, Steve Hickman, John Devine, DeLaura Padovan, Leslie Milbourne, Henry Chapin, Betsy Blachley, Laurie Madden, Joe Fallon, Gaye Fifer, Bill Wellington, Lorie Lichtenwalner**, and more!

For more information, and to register, please visit www.danceholiday.net

BamBLOOZled Blues Workshops & Exchange

December 3 - 5

Glen Echo Park

Capital Blues hosts a weekend of dances, workshops, and competitions at Glen Echo Park. The blues workshops will be multi-track for Beginner, Intermediate, and Advanced dancers. Our visiting instructors include **Topher Howard and Brenda Russell and Heidi Fite and Dexter Santos**.

- **Blues Dance on Friday, December 3 ~ Meschiya Lake.** Bumper Car Pavilion ~ 8 pm to midnight ~ \$15
- **Swing Dance on Saturday, December 4 ~ Shemekia Copeland.** Spanish Ballroom ~ 8 to midnight ~ swing dance lesson 8 - 9 pm ~ \$18
- **Blues Dance Sunday, December 5 ~ Brother Yusef.** Back Room ~ 7:30 to 11:30 pm ~ slow blues dance lesson 7:30 - 8:30 pm ~ \$12

The blues dance workshops will be held on Saturday from 11 am to 5:30 pm and Sunday from 12 pm to 5 pm. Check www.CapitalBlues.org for weekend details and pricing. For more information, call Donna Barker at 301-634-2231 or Glen Echo Park at 301-634-2222. The Glen Echo National Park is located at 7300 MacArthur Blvd, Glen Echo, MD 20812.

Chesapeake Dance Weekend

April 8 - 10, 2011

Camp Letts, Edgewater, MD

The 29th Annual Chesapeake Dance Weekend takes place April 8-10, 2011 and features Nils Fredland and Elixir, Ron Buchanan and Goatboy, and Matthew Duveneck and Anna Gilbert teaching exquisite cross-step waltz and sizzling milonga accompanied by Alexander Mitchell and Liz Donaldson. It's gonna be one swingin' party!

There is a substantial Youth Discount for dancers age 13-25 (attend for only \$160), and Kitchen Scholarships (\$50 discounts for 4 hours of help) are also available. Dancers ages 18-25 may combine these and attend for a cool \$110. For ALL the details, visit www.ChesapeakeDanceWeekend.org.

Also VERY important to note....if you register by January 1st (postmarked or online) you're IN for sure, no pesky wait list or lottery to stress out about! So act NOW.

Workshops

Introduction to playing old time fiddle

Tentative dates: Jan 10, 13, 20 and 24

Johns Hopkins University

No music background necessary. Hands on workshop--take home an instrument with you. Johns Hopkins Intersession, 5:30-6:30 pm, Sherwood Room, Levering Union, Johns Hopkins University Campus FEE: \$60.00 if have an instrument; \$75 if no instrument. Contact: Ken Kolodner at 410-243-7254 kenkolodner@aol.com or call JHU at 410-516-7428 or 410-516-4842 or see <http://www.jhu.edu/intersession/enrich/>

Introduction to playing the hammered dulcimer

January 10, 13, 20 and 24

Johns Hopkins University

No music background necessary. Hands on workshop--take home an instrument with you. Johns Hopkins Intersession, 7:00 - 8:00 pm, Sherwood Room, Levering Union, Johns Hopkins University Campus FEE: \$60.00 if have an instrument; \$75 if no instrument. Contact: Ken Kolodner at 410-243-7254 kenkolodner@aol.com or call JHU at 410-516-7428 or 410-516-4842 or see <http://www.jhu.edu/intersession/enrich/>

Baltimore Folk Music Society

Membership Application

Today's Date: _____
 Name: _____
 Address: _____
 City: _____ State: ____ Zip: _____
 Phone: (H) _____ (W) _____
 E-mail: _____

New member Renewal Address change
 Do not list my: Name Address Phone E-mail
 I do NOT want to receive e-mail notices of BFMS events

Enclose check payable to BFMS and mail to:
 BFMS
 P.O. Box 7134 Waverly Station,
 Baltimore, MD 21218
 or register online at www.BFMS.org

Folkie Interests <input type="checkbox"/> Contra dancing <input type="checkbox"/> Cajun / zydeco <input type="checkbox"/> English dancing <input type="checkbox"/> Coffeehouse / concerts <input type="checkbox"/> Singing <input type="checkbox"/> Storytelling <input type="checkbox"/> Family / kids events <input type="checkbox"/> Dance / camp weekends <input type="checkbox"/> Instruments / open band	Volunteer Interests <input type="checkbox"/> Greeting / ticket taking <input type="checkbox"/> Sound system <input type="checkbox"/> Refreshments <input type="checkbox"/> Newsletter <input type="checkbox"/> Graphic design—fliers, etc. <input type="checkbox"/> Hosting musicians / visitors <input type="checkbox"/> Website <input type="checkbox"/> Other _____
--	---

MEMBERSHIP CATEGORIES AND PRICES	
Student: 1 year (\$20) (no newsletter delivery)	\$ _____
Individual: 1 year (\$27) 2 years (\$50) 3 years (\$69)	\$ _____
Family: 1 year (\$37) 2 years (\$71) 3 years (\$93)	\$ _____
Newsletter only: 1 year (\$20)	\$ _____
Donation:	\$ _____
SPECIAL MEMBERSHIP:	
____ Contributor (\$75) ____ Supporter (\$150) ____ Sustainer (\$250) ____ Patron (\$500)	\$ _____
TOTAL ENCLOSED:	\$ _____

THE BALTIMORE FOLK MUSIC SOCIETY is a nonprofit, educational organization dedicated to preserving and promoting folk music, dance, and tradition. Members receive the newsletter eleven times a year and are eligible for discounts to Society events by showing their membership card. BFMS is a member of the Country Dance and Song Society, and shares reciprocity arrangements with the Folklore Society of Greater Washington and the Annapolis Traditional Dance Society.

Board Meetings are held on the first Tuesday of each month. Meetings are open to the public and members are encouraged to attend. Please call or email the president (see right-hand column). For more information on any BFMS event, call the Hotline at 888-646-BFMS (2367), or visit our web site: www.bfms.org.

Newsletter problems: Missing an issue? Check with the Membership Officer.

Late delivery? Please contact the Post-master.

Send us letters, articles, and event listings. To get your event in the newsletter: Send submission as plain text no later than the 10th of the month preceding publication. Email submissions to newsletter@bfms.org

The Baltimore Folk Music Society 2009-2010 Board

President	Jan Caughlan	410-788-7611	president
Vice President	Quintin Aspin	302-261-5675	vicepres
Secretary	Joyce Duffy-Bilanow	410-608-6731	secretary
Treasurer	Tom Bryson	410-265-5386	treasurer
American Dance	Brenna Hogan	410-963-2609	amdance
English Dance	Carl Friedman	410-321-8419	engdance
Special Events	Diane Friedman	410-321-8419	specialevents
Membership	Don Walters	410-922-5318	membership
Publicity	Rebecca Denison	301-606-7115	publicity
Newsletter	Noel-Marie Taylor	410-868-7861	newsletter
Members at Large	Mike Duty	410-461-8310	mal1
	John Sauer	301-345-2316	mal2
	Dan Katz	410-799-5596	mal3

Committees

Sat. Dances	Rebecca Denison	301-606-7115	nutritionexpeditions@yahoo.com
Webmaster	McGregor Yatsevitch	410-788-2761	webmaster
Catoctin	Ed VandenBosche	443-846-4748	catocotin
	Eileen Franch	410-889-3252	
Archivist	Diane Alberga	410-744-7045	archivist
Hospitality	Emily Aubrey/Greg Frock	410-433-4419	efiddlercrab@verizon.net
Wed. Gate Committee	Rich Pressman	410-486-5240	richircine@yahoo.com
Mid-Winter Ball	Joyce Duffy-Bilanow/ Steve Bilanow	410-608-6731	midwinter
Playford Ball	Tricia Valentine	443-546-3392	playford
Volunteer Co-ordinator	Nan Lyon	443-802-5357	nanlyon@hotmail.com

All addresses @bfms.org unless otherwise noted.



Baltimore Folk Music Society
 P.O. Box 7134
 Waverly Station
 Baltimore, MD 21218-0134
 Change Service Requested

PRESORTED
 FIRST-CLASS MAIL
 U.S. POSTAGE PAID
 HAGERSTOWN, MD
 PERMIT NO. 227

TIME VALUE



December 2010

Sunday	Monday	Tuesday	Wednesday	Thursday	Friday	Saturday
<p>BFMS and member sponsored events are in boldface. See indicated page numbers for information on events.</p>			1 Contra Dance 2 FSGW English 6	2 Slow Blues 6 Zydeco Dance 6 Baldwin Station 7	3 Ballroom Dance 4 Glen Echo Contra 5 Cellar Stage 7	4 Internat'l Dance 4 Orrin Star Concert 4 Shphrdstown Contra 6 Elverson Contra 6
5 Singing/Everyone 4 FSGW Contra 5 Glen Echo Waltz 5 Greg Brown Concert 7	6 English Dance 2 Ballroom Dance 4	7 BFMS Board Meeting 3 Scandin. Dance 6	8 Contra Dance 2 FSGW English 6	9 Slow Blues 6 Baldwin Station 7	10 Friendly Cffhse 1 Ballroom Dance 4 Locust Lane Contra 5 Glen Echo Contra 5	11 Contra Dance 3 Internat'l Dance 4 Early Dawn Workshop.Concert 7
12 Open Band 4 Dance of Peace 4 FSGW Contra 5 Glen Echo Zydeco 6	13 English Dance 2 Ballroom Dance 4	14 Scandin. Dance 6	15 Contra Dance 2 FSGW English 6	16 Slow Blues 6 Baldwin Station 7	17 Ballroom Dance 4 Glen Echo Contra 5 Cellar Stage 7	18 Internat'l Dance 4 ATDS Contra 5 Lancaster Contra 6 Perry Hall Music 7 Helicon Concert 7
19 Sacred Harp Sing 4 FSGW Contra 5 Glen Echo Waltz 5	20 English Dance 2 Ballroom Dance 4	21 Crossover Contra 5 Scandin. Dance 6	22 Contra Dance 2 FSGW English 6	23 Slow Blues 6	24	25
26 FSGW Contra 5	27 English Dance 2 Ballroom Dance 4	28 Scandin. Dance 6	29 Contra Dance 2 FSGW English 6	30	31 Ballroom Dance 4 Locust Lane Contra 5	