



Baltimore Folk Music Society

Member, Country Dance & Song Society

www.bfms.org

November 2009

Burn-Off-The-Calories Dance. A Thanksgiving Tradition

Thursday, November 26, 2009, 8:00-10:30

**St. Mark's-on-the-Hill Parish Hall,
1620 Reisterstown Rd. Pikesville**

The Baltimore Folk Music Society holds its 8th annual Thanksgiving Burn-Off-the-Calories Dance at St. Mark's-on-the-Hill, Pikesville. This is an all-volunteer evening featuring an open band led by Liz Donaldson and open mic for callers (English, contras, squares). Cost \$8.00 members (BFMS, FSGW, ATDS, CDSS); \$10.00 nonmembers, half price for little kids. Student discount. There will be easier, kid-and beginner-friendly dances from 8:00-8:30. Bring your leftover desserts to share (they lose calories in transit). Bring your dinner guests or hosts and come on over. Caller sign-up or information: Mike Franch at vicepres@bfms.org or (410) 889-3252.



Tellabration 2009! (Baltimore's 14th Annual Tellabration) - Tell-Tale Hearts

Saturday, November 21, Family Stories 7 pm, Adult stories 8:30 - 10:30; doors open 6:30

25 Stevenson Lane (off Charles Street) , Baltimore

Since 1988, Tellabration has taken place annually in hundreds of locations around the world on the Saturday before Thanksgiving. Whether this is your first time joining us or you have joined us for many years, we know that you will have a terrific time. New this year is the addition of several fine musicians whose talent will add to your experience: Leah Ulansey, Marjorie Roswell, Thomas Rhoads and Amy Ksir. We proudly present 10 of the region's finest storytellers. In addition to welcoming back some favorite tellers from previous years, we will also present some exciting new tellers. Our tellers are: Allison Butlien, Mike Franch, Fred Freuthal, Maura Manley, Beth Ohlsson, Chris Potts, Bill Rogers, Barbara Woodey, Marc Young, and Joan Zelinka. Their stories are guaranteed to entertain and delight you, to touch your heart, to bring tears to your eyes, and make you laugh uproariously. Leading us on this journey is our skillful emcee, Matthew-Daniel Stremba. Under Matthew-Daniel's baton, the audience actively participates in the magic of the evening. We have learned over the years that folks look forward to this evening of community bonding and participation, intergenerational fun, and relaxation, before the hectic rush of the holiday season. In the words of Native American author and scholar, Oren Lyons: "Life will go on as long as there is someone to sing, to dance, to tell stories, and to listen."

Plenty of free parking, wheel chair accessible. Refreshments available, please bring canned goods for The Towson Assistance Center. Admission: Adults: \$8 members, \$10 for non-members, Children and full-time students: \$5, group discounts available. Contact for more information: specialevents@bfms.org or Diane at 410-321-8419

BFMS Sponsored Dances

BFMS English Country Dance*

St. Mark's on the Hill, 1620 Reisterstown Rd, Pikesville

1/3 mile inside the Baltimore Beltway, at Exit 20 South

Monday evenings, 8 - 10:30 pm; New dancer workshop 7:45 pm on the first Monday of each month

Jane Austen did it (and wrote about it). George Washington did it (but not with Jane Austen). You can too! Each dance is taught and walked through. You don't have to bring a partner. We always have live music and friendly dancers ready to welcome and teach new dancers. Admission: \$10/\$7 for BFMS members & affiliates. Info: engdance@bfms.org or www.bfms.org

November 2

Mike French calls to the music of the **Geud Band of Baltimore**.

November 9

Carl Friedman calls with music by **Jeff Steinberg** on violin, **Marty Taylor** on recorders and concertina, and **Francine Krasowska** on piano.

November 16

Tom Spilsbury calls to music by **Emily Aubrey** on violin, **Karin Loya** on cello, and **Liz Donaldson** on piano.

November 23

Michael Barraclough calls to tunes by **Carl Friedman** on violin, **Robin Wilson** on flute, and **Jonathan Jensen** on piano.

November 30

Sharon McKinley calls with music by **Becky Ross** on violin, **Marty Taylor** on recorders and concertina, and **Ralph Barthine** on guitar.

BFMS American Contra & Square Dance*

Historic Lovely Lane Church, 2200 St Paul St.

Wednesday evenings, 8 - 10:30 pm

New dancer orientation: 7:30 pm, 2nd and 4th Wednesdays

Music and dance styles include New England, Southern Appalachian, and Celtic. Nationally-known musicians and callers appear regularly, as well as local favorites. Dances are taught and walked through. No partner necessary. New dancers always welcome.

Admission: \$12/8 BFMS members and affiliates. Full-time students receive a \$3 discount. Snack contributions for the break are welcome. Info: amdance@bfms.org or www.bfms.org

November 4

David Giusti calls to **Taylor Among the Devils: Steve Hickman** on fiddle, **Marty Taylor** on concertina and whistle, and **Jonathan Jensen** on piano.

November 11

Greg Frock calls to **Sugar Beat: Elke Baker** on fiddle, **Susan Brandt** on flute, and **Marc Glickman** on piano, guitar, and bodhran.

November 18

Robbin Marcus calls to music by **Andrea Hoag** on fiddle, **Dave Marcus** on concertina, and **Charlie Pilzer** on piano.

November 25

Work up an appetite for Thanksgiving as you dance to the music of **Fiddlestyx: Steve Hickman** on fiddle, **Jon Simmons** on fiddle, **John Devine** on guitar, and **Jim Bienemann** on bass. **DeLaura Padovan** will be calling.

Directions to Lovely Lane

From the North: Take I-83 south to the 28th Street/Druid Hill exit. Bear left and take 28th St. to Maryland Ave. Turn right on Maryland Ave then left on 23rd St.

From the South: I-95 to I-395, exiting for downtown Baltimore onto S. Howard and turning right onto Pratt. Once on Pratt, turn left onto Charles and then right onto 23rd St. Use parking lots on either side of 23rd St at St Paul. The church is on the right.



The Baltimore Folk Music Society is funded by an operating grant from the Maryland State Arts Council, an agency dedicated to cultivating a vibrant cultural community where the arts thrive. Funding for the Maryland State Arts Council is also provided by the National Endowment for the Arts, a federal agency, which believes that a great nation deserves great art.

BFMS and Member Sponsored Dances & More

BFMS Family Dance *

Saturday, November 14, 5 pm, potluck at 6:30

St Mark's, 1620 Reisterstown Rd., Pikesville MD

Rebecca Denison and Miriam Hack call dances for all ages to music by **Some Assembly: Mary Corletta Flora** on flute, whistles and saxophone; **Donna Boylan** on piano; **Joe Klausner** on fiddle and mandolin; and **Paul Miller** on guitar and bodhran.

All ages welcome! Admission: \$5 members \$20 maximum member families, \$7 non-members \$28 maximum non-member families. Group discounts are available.

For more information call the **BFMS** hotline at 1-888-646-BFMS or email Becca Denison at nutritionexpeditions@yahoo.com.

BFMS Second Saturday Contra Dance *

Saturday, November 14, 8 - 11 pm; new dancer orientation at 7:30 pm; potluck 6:30

St Mark's, 1620 Reisterstown Rd., Pikesville MD

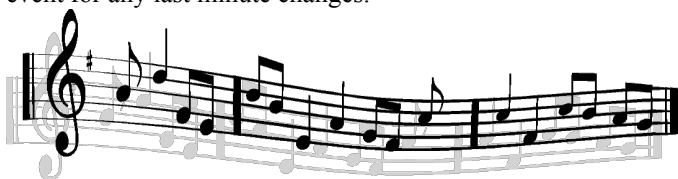
This month's Second Saturday Contra features calling by **Rebecca Denison** and music by **Some Assembly: Mary Corletta Flora** on flute, whistles and saxophone; **Donna Boylan** on piano; **Joe Klausner** on fiddle and mandolin; and **Paul Miller** on guitar and bodhran. Admission is: \$8 BFMS Members & Affiliates, \$12 non-members. Under 21 and full-time students with ID: \$5 members, \$6 non-members. Beginners, singles, couples, and families are welcome. No Experience necessary; you don't need to bring a partner. For more information call the **BFMS** hotline at 1-888-646-BFMS or email Becca Denison at nutritionexpeditions@yahoo.com.

The Friendly Coffeehouse *

Friday, November 13, 8-11 pm

Calvary Baptist, 120 W Pennsylvania Ave., Towson

Join us the second Friday of each month for an evening of music and more. Acoustic performers are invited to sign up for open mike slots (three songs or ten minutes). Friendly, supportive atmosphere with a music-loving audience that really listens! Parking lot in the back; piano inside. For info., call 410-628-1094; email leahu@earthlink.net; or check our website at www.friendlycoffeehouse.org on the day of the event for any last minute changes.



Lui Collins Family Concert*

Sunday, November 15, 4 pm

St Mark's, 1620 Reisterstown Rd., Pikesville MD

Lui Collins has earned international acclaim for her "grown-up" music, but when she gets in front of a group of families with young children, all the seriousness falls away as she gets down to the business of singing with children. While her over 35 years of music study and performance is evident in her vocal and instrumental proficiency (she accompanies herself on guitar and banjo), the spontaneity she's learned in working with the youngest of children is what rules in her family concerts, as she brings her spirit of playfulness and whimsy to the stage.

Admission: \$5 members (\$20 maximum member families), \$7 non-members (\$28 maximum non-member families). Group discounts are available. For more info. go to www.bfms.org, call Ann Quinn at 747-4920, or email Miriam Hack at miriam@musictogethercharmcity.com.

Lui Collins House Concert‡

Sunday, November 15, 8 - 10 pm

505 Sudbrook Lane, Pikesville MD

For over thirty years and on dozens of recordings Lui Collins has been offering heartfelt songs and stories of what it means to be a person, and a woman, in this world. Her music ranges through contemporary, spiritual, passionate and playful, but always it is a real, honest, and deeply moving expression of the complex and insightful woman she is: whimsical spirit, wise elder, mother, grandmother, woods walker, writer, poet, teacher. Somehow all these parts and more emerge in her concerts as she engages the audience in an intimate dialogue of song and poem, voice, guitar and banjo.

Her website is at www.luicollins.com for more information.

We will have a maximum of 25 people in this intimate unamplified setting so advance reservations are strongly suggested. \$15 donation suggested. 410-753-2351; bsmiler@bardon.com for reservations.

Singing for Everyone‡

Sunday, November 1, 7 - 9 pm

Homewood Friends Meetinghouse, 3107 N Charles

Join us for an evening of songs and company - all are welcome! Snacks are welcome but will be confined to the lunch room downstairs. Free on-street parking. For more info or directions, please contact Susan Warner at sewarner@hotmail.com

BFMS & Member Sponsored Events

English Open Band Practice ‡

Sunday, November 1, 3:30 - 6 pm

The Geud Band of Baltimore, a rehearsed open band for English dancing, practices monthly and plays for Monday night dances every 2 to 3 months.. Newcomers welcome. The next practice is Sunday, Nov. 1, 3:30-6pm in the Waverly neighborhood of Baltimore. For information contact Eileen Franch, 410-889-3252 or Franch@verizon.net.

Baltimore Open Band Practice ‡

Sunday, November 8, 4 to 6 pm

Come toot, snap, fiddle, and plink with the ever-lovin' Baltimore Open Band. This group is a community gem whose members meet on the second Sunday of each month in Catonsville. All ages, instruments, and levels are truly welcome. For more info, contact Susan Taylor at 301-982-1107 or susantaylor@greenbelt.com

International Folk Dancing ‡

Saturdays, 7:30-10:30 pm.

Homewood Friends Meetinghouse, 3107 N. Charles

Dances from Europe, Israel and other countries of the Near and Middle East. Beginners welcome; no partner necessary. Admission \$2; first time free. Lessons first half hour. Al & Hildy Saunders 410-484-9392 (check machine message to confirm dancing is on) or Paul & Elise Kreiss 410-367-8194 (evenings & weekends) or pkreiss@toadmail.net Call to arrange handicapped access.

Ballroom Dancing & Lessons ‡

Fridays, 8 pm

JHU ROTC Building

Waltz, rumba, tango & more! Our 18th year; always free! From 39th St & University Pkwy go south onto San Martin Drive; take 3rd left into campus. Climb wooden stairs, far side of building. Don't pay to park. No partner needed. Plan to change partners often (not required). For info contact Dave/ Anne Greene 410 599-3725.

BFMS Board Meeting *

Tuesday, November 3, 7:30 pm

Meetings are open to all BFMS members, and all are encouraged to attend. Ice cream social follows meeting. For directions, agenda, and other information, please contact the President (see page 9).

Midwinter Ball --Save The Date!

Saturday, January 30, 2010

Look for a flier next month, but for now -- get ready for the robot invasion! That's right, we've got **Giant Robot Dance** playing for this year's Midwinter Ball! **Michael Ferguson** on trombone, **Aaron Marcus** on piano, **Andrew Marcus** on accordion, **Andrew VanNorstrand** on electric guitar and fiddle, and **Noah VanNorstrand** on drums. It's going to be a great evening!

Geoff Kaufman House Concert ‡

Friday, November 13, 8 pm

Catonsville, MD

Songs of the sea, songs of the earth, songs of the heart and the spirit. All of these are in Geoff Kaufman's ditty bag. Ballads, work songs, and songs of love; poignant songs of people engaged in life's struggles, humorous glimpses of human foibles, and insights into history. \$12

Info: Barbara and McGregor, 410-788-2761 anytime before 8 pm, or svob@comcast.net. Reservations necessary.

2nd Sunday Drum Circle

Sunday, December 13, 4 -6 pm

Homewood Friends, 3107 N Charles St., Baltimore

Come join our drum circle, facilitated by African drummer Dehconte. All levels are welcome. Come to drum and/or dance. Bring drums if you have them; some extra drums and instruments will be provided if you don't. \$5 donation

For info. contact Linda Niederman at lniederman@hotmail.com or 410-308-0155. Dehconte can be reached at dehconte@hotmail.com or 443-956-8030.

An Apology from your editor...



Last month, when typing up board member bios, I had a brain lapse, and put the wrong last name with our wonderful Secretary and New Dancer Workshop teacher (and did I mention co-chair for the Midwinter Ball?). **Joyce Duffy-Bilanow** is the wonderful woman who does these for us, and she deserves to be recognized again with her **correct** name this time!

Other Dances

Friday Night Dancers

Fridays, 8:30 - 11:30 pm, Beginner Workshop 7:30

Spanish Ballroom, Glen Echo Park, MD

Weekly contra dances to live music in the Glen Echo Park Spanish Ballroom. New dancer classes start at 7:30 pm. Dances start at 8:30. Admission price is \$9 for the lesson and dance. www.fridaynightdance.org

November 6

Jeremy Korr calls to **Toad Mamas**.

November 13

TBA calls to the fabulous **Glen Echo Open Band**.

November 20

Chris Weiler calls to **Nor'easter**.

November 27

Shawn Brenneman calls to **Capitol Quicksteps**.

Lancaster Contra Dance

Saturday, November 21, 8 to 11 pm

St John's, 321 Chestnut St, Lancaster

Susan Hankin with **Strings on Wings**. Beginners workshop at 7 pm. Dance 8-11 pm. \$8/\$5. For information call Shane at (717) 431-7417 or www.lancastercontra.org.

Frederick Contra Dance

Saturday, November 28, 8 pm (workshop 7 pm)

Trinity School, Frederick (by Harry Grove Stadium)

David Giusti calls to hot tunes played by **Duo Du Jour** featuring local favorites **Alexander Mitchell** on fiddle, and **Liz Donaldson** on piano. General-\$8; Students-\$5; 12 and under \$4. Info/directions: www.contradancers.com or call Boe Walker at 301-694-6794.

Locust Lane Contra Dance

2nd & 4th Friday, 8 - 11 pm, Free workshop at 7:30

Christ the Savior Orthodox Church, 5501 Locust Lane, Harrisburg PA

November 13

Shane Knudsen calling with **Rumpus**.

November 27

Open Mike for Callers! We're looking for a herd of callers to call to music by **Herd of Cats**.

Admission \$9/\$8 members. For more info or directions, contact Dave Colestock at 717-770-1477 or LocustLaneContra.freesevers.com.

www.bfms.org

* BFMS Event

5

‡ Member Sponsored Event

888-646-BFMS

FSGW Sunday Night Squares & Contras

Sundays, 7:30 - 10:30 pm, Beginner Workshop 7 pm

Spanish Ballroom, Glen Echo Park, MD

Contras and squares for new and experienced dancers. No partner necessary. New dancers please arrive early. Admission \$12, \$9 for members, \$4 ages 17 and under. For info contact dance@fsgw.org or www.fsgw.org

November 1

Peg Hesley calls to music by **Dr. Twamley's Audio Snakes**.

November 8

Anna Rain calls to **The Love Mongrels**.

November 15

Gay Fifer calls with **Notorious**.

November 22

Steve Gester calls to music by **Mucho Gustro**.

November 29

George Marshall calls to tunes by **Clayfoot Strutters**.

FSGW Family Dance

Sunday, November 8, 3 pm

Glen Echo Town Hall, Glen Echo Park, MD

Anna Rain calls dances for children of all ages to music by **Alexander Mitchell** and **Henry Koretsky**. Admission \$5 for ages 4 and older. fsgw.org.

Community Dance Party

Saturday, November 14, 7-10 pm

Kiwanis Club, 1133 Carrs Wharf Rd, Mayo 21106

Squares, circles, longways sets, and waltzes. All ages welcome. No partner or previous experience needed. LIVE Traditional Appalachian dance tunes played by **Leah Weiss** (fiddle), **Gary Wright** (guitar), and Friends. **Janine Smith** calls the figures. Just 10 miles south of Annapolis! More info (301) 926-9142.

Arden Contra Dance

Sunday, November 1, 2 - 5 pm; lesson at 1:30 pm

Arden Gild Hall, Arden, DE.

Shane Knudsen calling to **Jane's Gang**. \$9. For info: (302) 478-7257 or <http://home.sprynet.com/~rbrat/>

More Dances

Annapolis Traditional Dance Society Contra

Saturday, November 21, 7 p.m.; workshop 6:30
Annapolis Friends Meeting Hall, 351 Dubois Road

Contras & Squares. **David Giusti** calls to the tunes of **Gypsy Meltdown** (**Kathy Kerr**, fiddle; **Colleen Reed**, flute; **Keith Gillis**, guitar).

Admission \$10 with discounts for seniors, students, families and members of ATDS. All ages welcome. All dances taught and walked through. No experience or partner required. Snacks to share at the break are welcome!

Questions?? Contact Jan Scopel at 443-540-0867 or janscope@hotmail.com; www.contradancers.com/atds

FSGW English Country Dancing

Wednesdays 8-10:30 pm

Glen Echo Town Hall, 6106 Harvard St, Glen Echo

\$10/\$8 members. More info: 301-320-2469, 301-229-3577, or English@fsgw.org. Live musicians each week.

November 4

Tom Spilsbury calls to the music of **Colleen Reed** (flute), **Ralph Gordon** (cello) and **Francine Krasowska** (piano).

November 11

Martha Seigel leads the dancing while **Susan Brandt** (flute), **Bruce Edwards** (concertina and bassoon) and **Melissa Running** (piano) play the tunes.

November 18

Dan Gillespie calls while **Jeff Steinberg** (fiddle), **Anna Rain** (recorders) and **Liz Donaldson** (piano) make the music.

November 25

Bob Farrall calls to the playing of **Becky Ross** (fiddle), **Liz Donaldson** (piano) and **Karin Loya** (cello).

Sunday Blues in the Ballroom

2nd & 4th Sundays, 8:30 - 11 pm (lesson 7 pm)

Spanish Ballroom, Glen Echo Park

November 8: Band TBA

November 22: DJ Mike Marcotte & Friends

Workshop by Donna Barker and Mike Marcotte. \$17 for workshop and dance; \$12 for dance only. For more information, call Donna Barker at 301-634-2231 or go to www.DanceDC.com.

Glen Echo Afternoon Waltz

1st & 3rd Sundays, 3 pm lesson, 3:30 - 6 dancing.
Spanish Ballroom, Glen Echo Park, Glen Echo, MD

November 1

Honeysuckle Rose

November 15

Notorious

Dance to a lively mix of folk waltzes with a few other couples dances, including Hambo, Schottische, Swing, Tango, and Polka. Admission is \$8 per person. For info: go to www.WaltzTimeDances.org, e-mail info@WaltzTimeDances.org, or call Glen Echo Park at 301-634-2222.

Scandinavian Dance Classes

Tuesdays, 7:30 - 9:30 pm (see schedule below)

NIH, Bethesda, MD (ID required to enter facilities)

In the Beginning Class (November 10), learn Hambo, Schottish, Waltz, Zwiefacher, and other couple turning dances. Some Hambo is done every time. In the Advanced Class (November 3 & 17), learn dances from Boda, Orsa, Rättvick, Ragunda, and Föllinge, as well as Finnskogspols, Nigpolska, Gammalvånster, and requests. Singles, couples, beginners, and advanced dancers welcome. Sometimes live Swedish fiddle music. Wear smooth-soled shoes for turning, not running shoes. \$5. Info: Lisa Brooks at 240-731-1935, lisa@HamboDC.org, or www.HamboDC.org. Go to web site to get map for directions and parking! New entrance to NIH -- be sure to check web site for info!

Slow Blues Dancing and Lesson

Thursdays, 9 - 11 pm (lesson at 8:30)

“Back Room” at Glen Echo Park

Music by DJ Mike Marcotte & guests. Admission \$8 for lesson and dance. For more information, call Donna Barker at 301-634-2231 or Glen Echo Park at 301-634-2222, or go to www.CapitalBlues.org. **No dance November 26!**

Tea Dance Sunday Afternoon

Sunday, November 22, 3:30-6 pm, lesson 3 pm

Spanish Ballroom, Glen Echo Park, MD

The Hot Society Orchestra of Washington, featuring music and dances from the 20's, 30's and 40's. Foxtrot, two-step, waltz, cha cha, rumba, swing and more. No partner/experience necessary. \$12 www.glenechopark.org or www.hotsociety.net.

More Dances & Concerts

Zydeco/Cajun Dances

2nd & 4th Sundays, 3:30 - 6 pm; lesson at 3

Bumper Car Pavilion, Glen Echo Park

November 8

Acadien Cajun Band

November 22

Dennis Stroughmatt & Creole Stomp

Join us for a Cajun/Zydeco dance in the Bumper Car Pavilion at Glen Echo Park. The 30-minute Cajun dance lesson given by Michael Hart and Sharon Schiliro begins at 3 pm with dancing from 3:30 pm to 6 pm. Admission is \$15.

For more information, call Michael Hart at 301.762.6730 or go to www.DancingbytheBayou.com. The Glen Echo National Park is located at 7300 MacArthur Blvd, Glen Echo, MD 20812.

Concerts

Institute of Musical Traditions

Mondays, 7:30 pm

St Mark's, 10701 Old Georgetown Rd, Rockville

November 2: **Victoria Vox & Patty Reese**. \$15 adv/\$20 door

November 9: **Kitchen Quartet**. \$15 adv/\$20 door

November 16: **Red Molly**. \$18 adv/\$22 door

November 23: **Jeremy Kittel World Band**. \$18 adv/\$22 door

November 30: **Roy Book Binder**. \$15 adv/\$20 door

INFORMATION: call 301.754.3611 or visit www.imtfolk.org

The Cellar Stage

Fridays, 8 pm

Faith UMC, 5315 Harford Rd., Baltimore

November 6

Cliff Eberhardt \$18

November 20

Nathan Rogers, with **Alexandra Day** opening. \$20

Tickets: 410-521-9099, to speak with Joyce: 410-922-5210
joycersica@yahoo.com www.uptownconcerts.com

Concerts

Uptown Concerts at Baldwin's Station

Thursdays, 8 pm (dining room opens 6:30)

7618 Main Street, Sykesville

November 12

Garnet Rogers \$20

November 19

Mac Walter & John Cronin \$18

Tickets: 410-795-1041 or uptownconcerts@gmail.com

Paddy O'Brien and Pat Egan

Friday, December 4

Stoney Run Meeting House, 5116 N Charles

Paddy O'Brien (accordion) and Pat Egan (guitar and song) will present an evening of traditional Irish music. They will be accompanied by Peter FitzGerald and friends. Paddy O'Brien is regarded as the embodiment of the living Irish music tradition, one who understands and communicates the essence of Gaelic culture, going beyond technique to the spirit that drives the music. Pat Egan brings together a rare combination of sensitive guitar backing and impeccable rhythm with smooth, lyrical vocals to highlight a repertoire of storied songs. Suggested donation of \$15 per person advance, \$20 at the door. Contact 410-598-9094 for information or tickets@jpatrickallstars.com for reservations.

Helicon Winter Solstice Concert

Saturday, December 19, 3:30 & 8 pm

Kraushaar Auditorium, Goucher College

The **Baltimore-based** trio, *Helicon*, celebrates their **24th** reunion appearance in this year's **Winter Solstice Concert**, at **Kraushaar Auditorium** (1021 Dulaney Valley Road) at **Goucher College**, on **Saturday, December 19** for two shows: **3:30 pm and 8 pm**. *Helicon* blends the talents of Baltimore natives Ken Kolodner (hammered dulcimer, fiddle, hammered mbira), Chris Norman (wooden flutes, tin whistle, small pipes, vocals, piano) and Robin Bullock (guitar, cittern, fiddle, piano) and a repertoire spanning the traditional folk music of nearly 30 countries, along with the sounds of the season. While *Helicon's* style is clearly Celtic flavored, the concert will feature a unique blend of seasonal and traditional music from Appalachia, Israel, Quebec, Nova Scotia, Europe, Africa, the Far East, Ireland, and Scotland and beyond. Tickets are available at www.kenkolodner.com via credit card or call 410-243-7254; \$28 at the door; \$25 in advance; \$21 for groups of 15+; \$21 for groups of 30+.

Concerts, Workshops, Camps, & More

Weekly Blues Jams

Saturdays, 1 to 5 pm

4701 Queensbury Rd, Riverdale

The weekly Saturday blues jams of the Archie Edwards Blues Heritage Foundation have resumed at the foundation's new Riverdale, MD home at 4701 Queensbury Rd. The jams are open to everyone interested in playing, learning to play, or listening to acoustic blues. The jams are free, but donations are welcome to help defray costs of the facility and to support the foundation's educational programs.

For more information go to: www.acousticblues.com

Bluegrass Jams

Dedicated to new and intermediate bluegrass players and fans. An old fashioned jam. Guests and listeners welcome, finger food contributions accepted but not expected. Check events schedule. <http://www.meetup.com/Baltimore-Bluegrass/>

Every third Saturday of every month, the Middle River Recreation and Parks Council hosts a live bluegrass festival from 7 pm to 11 pm. It's held at The Victory Villa Community Building: 404 Compass Rd E Middle River, MD 21220. Admission is free and they sell coffee, soda and great hot dogs. You'll soon discover that pretty much all styles of Bluegrass and Country music are played...and you'll have a great time! No egos and super friendly folks. You can get more info by dialing 410-687-5340.

Special Events & Camps

Butterball

Saturday, November 28, noon to midnight

St Thomas Indian Church, Philadelphia

12 hours of dancing and fun! **Rick Mohr** and **Rumpus, Susan Taylor** and **Avant Gardeners, Beth Molaro** and **Giant Robot Dance**, and **George Marshall** and **Clayfoot Strutters**. PLUS a contra medley and two waltz sessions -- one with harpist **Ellen Tepper** and the other with the incredibly talented pianist **Bob Pasquarello**. Only \$30 for the whole day! Food available for purchase, or visit one of the many local restaurants. For more information, see www.strutyourstuffing.org

Dr Dance Says...

"Help avoid flu and other winter colds. Wash your hands often, and please be considerate of others. If you're not feeling well, please stay home for one evening. Sharing is good, except when it comes to germs!"

Special Events & Camps

FSGW New Year's Eve English Country Dance

Thursday, December 31st, 6:30 pm - 12:30 am

Historic Adelphi Mill, Adelphi, MD

Caller Melissa Running with music by Liz Donaldson (piano), Colleen Reed (flute), and Becky Ross (fiddle). Also couple dancing, potluck dinner, dessert, and midnight toast.

\$28/ members and affiliates, \$30/ guests. Register by Dec. 14 for \$3 off. More info: fsgw.org or 301-577-5018 or 301-585-7750.

Terpsichore's Holiday

December 27, 2009- January 1, 2010

Stonewall Resort, Roanoke, West Virginia

Terpsichore is a folk dance camp for ages 4 & up. Join us for a great vacation and experience the magic of 5 days and nights of dancing, music-making, crafts, nature hikes, meals and 4-star accommodations at Stonewall Jackson Lake State Park! Enjoy the community spirit of our 13th annual winter dance camp. With programs for adults, teens and children, activities include contras & squares, English country, swing dance swap, English ritual dancing (Morris and sword), dance band, arts & crafts, singing, storytelling, nature hikes, swimming, community dances, and nightly contra dances. Featuring Bill Wellington, Gaye Fifer, Notorious, Abby Ladin, Anna Rain, Danny Kniceley, Shawn Brenneman, Henry Chapin, Besty Blachley, Lori Madden, and More!

For best rates, register before December 1. Details and registration information: www.danceholiday.net. Questions? Contact Sylvia Malm at danceholiday08@gmail.com

Contradancers' Delight Holiday

December 26 - 31

Morgantown, WV

Featuring bands Congrarians, Elftones, Land of Sky, and Skytones. Callers Beth Molaro and Nils Fredland. Week and daily packages available, limited registrations! www.warrendoyle.com for more information.

Baltimore Folk Music Society

Membership Application

Today's Date: _____
 Name: _____
 Address: _____
 City: _____ State: ____ Zip: _____
 Phone: (H) _____ (W) _____
 E-mail: _____

New member Renewal Address change
 Do not list my: Name Address Phone E-mail
 I do NOT want to receive e-mail notices of BFMS events

Enclose check payable to BFMS and mail to:
 BFMS
 P.O. Box 7134 Waverly Station,
 Baltimore, MD 21218
 or register online at www.BFMS.org

Folkie Interests	Volunteer Interests
<input type="checkbox"/> Contra dancing	<input type="checkbox"/> Greeting / ticket taking
<input type="checkbox"/> Cajun / zydeco	<input type="checkbox"/> Sound system
<input type="checkbox"/> English dancing	<input type="checkbox"/> Refreshments
<input type="checkbox"/> Coffeehouse / concerts	<input type="checkbox"/> Newsletter
<input type="checkbox"/> Singing	<input type="checkbox"/> Graphic design—fliers, etc.
<input type="checkbox"/> Storytelling	<input type="checkbox"/> Hosting musicians / visitors
<input type="checkbox"/> Family / kids events	<input type="checkbox"/> Website
<input type="checkbox"/> Dance / camp weekends	<input type="checkbox"/> Other _____
<input type="checkbox"/> Instruments / open band	

MEMBERSHIP CATEGORIES AND PRICES	
Student: 1 year (\$20) (no newsletter delivery)	\$ _____
Individual: 1 year (\$27) 2 years (\$50) 3 years (\$69)	\$ _____
Family: 1 year (\$37) 2 years (\$71) 3 years (\$93)	\$ _____
Newsletter only: 1 year (\$20)	\$ _____
Donation:	\$ _____
SPECIAL MEMBERSHIP:	
___ Contributor (\$75) ___ Supporter (\$150) ___ Sustainer (\$250) ___ Patron (\$500)	\$ _____
TOTAL ENCLOSED:	\$ _____

THE BALTIMORE FOLK MUSIC SOCIETY is a nonprofit, educational organization dedicated to preserving and promoting folk music, dance, and tradition. Members receive the newsletter eleven times a year and are eligible for discounts to Society events by showing their membership card. BFMS is a member of the Country Dance and Song Society, and shares reciprocity arrangements with the Folklore Society of Greater Washington and the Annapolis Traditional Dance Society.

Board Meetings are held on the first Tuesday of each month. Meetings are open to the public and members are encouraged to attend. Please call or email the president (see right-hand column). For more information on any BFMS event, call the Hotline at 410-366-0808, or visit our web site: www.bfms.org.

Newsletter problems: Missing an issue? Check with the Membership Officer.

Late delivery? Please contact the Post-master.

Send us letters, articles, and event listings. To get your event in the newsletter: Send submission as plain text no later than the 10th of the month preceding publication. Email submissions to newsletter@bfms.org

The Baltimore Folk Music Society 2009-2010 Board

President	Jan Caughlin	410-788-7611	president
Past President	Dan Katz	410-799-5596	pastpres
Vice President	Mike Franch	410-889-3252	vicepres
Secretary	Joyce Duffy-Bilanow	410-608-6731	secretary
Treasurer	Tom Bryson	410-265-5386	treasurer
American Dance	Brenna Hogan	410-963-2609	amdance
Cajun/Zydeco	Amelia Lazarus		zydeco
English Dance	Carl Friedman	410-321-8419	engdance
Special Events	Diane Friedman	410-321-8419	specialevents
Membership	Don Walters	410-922-5318	membership
Publicity	Rebecca Denison	301-606-7115	publicity
Newsletter	Noel-Marie Taylor	410-868-7861	newsletter
Members at Large	Tori Hokanson	443-889-2074	mal1
	Tricia Valentine	443-546-3392	mal2
	Quintin Aspin	301-261-5675	mal3

Committees

Family			
Sat. Dances	Rebecca Denison	301-606-7115	nutritionexpeditions@yahoo.com
Webmaster	McGregor Yatsevitch	410-788-2761	webmaster
Catoctin	Matt Bieneman	410-799-9180	catoctin
Archivist	Diane Alberga	410-744-7045	archivist
Hospitality	Emily Aubrey/Greg Frock	410-433-4419	efiddlercrab@verizon.net
Wed. Gate	Rich Pressman	410-486-5240	richircine@yahoo.com
Mid-Winter Ball	Joyce Duffy-Bilanow/ Steve Bilanow	410-608-6731	midwinter
Playford Ball	Tricia Valentine	443-546-3392	playford
Volunteer Co-ordinator	Nan Lyon	443-802-5357	nanlyon@hotmail.com

All addresses @bfms.org unless otherwise noted.



Baltimore Folk Music Society
 P.O. Box 7134
 Waverly Station
 Baltimore, MD 21218-0134
 Change Service Requested

PRESORTED
 FIRST-CLASS MAIL
 U.S. POSTAGE PAID
 HAGERSTOWN, MD
 PERMIT NO. 227

TIME VALUE

November 2009

Sunday	Monday	Tuesday	Wednesday	Thursday	Friday	Saturday
Singing/Everyone 1 Geud Band 3 FSGW Contra 5 Arden Contra 5 Glen Echo Waltz 6	English Dance 2 IMT Concert 7	Board Meeting 3 4 Scandinavian Dance 6	Contra Dance 4 FSGW English 2 6	Slow Blues 5 6	Ballroom Dance 6 Glen Echo Contra 4 5 Cellar Stage 7	Internat'l Dance 7 Blues Jam 4 8
Open Band 8 4 FSGW Contra 5 FSGW FamDance 5 Glen Echo Blues 6 Glen Echo Zydeco 7	English Dance 9 2 IMT Concert 7	Scandinavian 10 Dance 6	Contra Dance 11 FSGW English 2 6	12 Slow Blues 6 Baldwin Station 7	Friendly Cffhse 13 3 House Concert 4 Ballroom Dance 4 Glen Echo Contra 5 Locust Lane Contra 5	Family Dance 14 3 Contra Dance 3 Internat'l Dance 4 Community Dance 5 Blues Jam 8
Lui Collins Concerts 15 3 FSGW Contra 5 Glen Echo Waltz 6	English Dance 16 2 IMT Concert 7	Scandinavian 17 Dance 6	Contra Dance 18 FSGW English 2 6	19 Slow Blues 6 Baldwin Station 7	Ballroom Dance 20 4 Glen Echo Contra 5 Cellar Stage 7	Tellebration! 21 1 Internat'l Dance 4 Lancaster Contra 5 ATDS Contra 6 Blues Jam 8
FSGW Contra 22 5 Glen Echo Blues 6 Tea Dance 6 Glen Echo Zydeco 7	English Dance 23 2 IMT Concert 7	24	Contra Dance 25 FSGW English 2 6	26 Burn off the Calories Dance 1	Ballroom Dance 27 4 Glen Echo Contra 5 Locust Lane Contra 5	Internat'l Dance 28 4 Frederick Contra 5 Blues Jam 8 Butterball 8
FSGW Contra 29 5	English Dance 30 2 IMT Concert 7	<div style="border: 1px solid black; border-radius: 15px; padding: 10px; display: inline-block;"> BFMS and member sponsored events are in boldface. See page numbers for details on events. </div>				